

TEAMS MANAGER BRIEFING



WELCOME TO CIRCUIT ZANDVOORT

DRIVERS BRIEFING

ZANDVOORT · NETHERLANDS 

FUN CUP



 **Hankook**
driving emotion



WELCOME TO CIRCUIT ZANDVOORT



**You can download this
briefing at the following
website adress:**

**[https://www.europeanfuncup.be/
documents/](https://www.europeanfuncup.be/documents/)**



THANK YOU

Never Forget without the marshals you don't get to race!



YELLOW FLAG



DANGER

NO OVERTAKING



TIMING INFORMATION
LAST VERSION =
FINAL 1



PAYING PRACTICE

SATURDAY

09.30 => 13.30

ALL TEAMS READY 5 MINUTES IN ADVANCE



FREE PRACTICE

SATURDAY

15.00 => 17.00

ALL TEAMS READY 5 MINUTES IN ADVANCE

DIRECTLY START OF QUALIFYING



QUALIFYING

SATURDAY

17.00 => 18.00

STARTGRID RACE

=

DRAWING OF LOT

(BASE QUALIFYING)

RACE

SUNDAY

09.00 => 17.00

ALL TEAMS READY 30 MINUTES IN ADVANCE

Start Procedure at 08.35

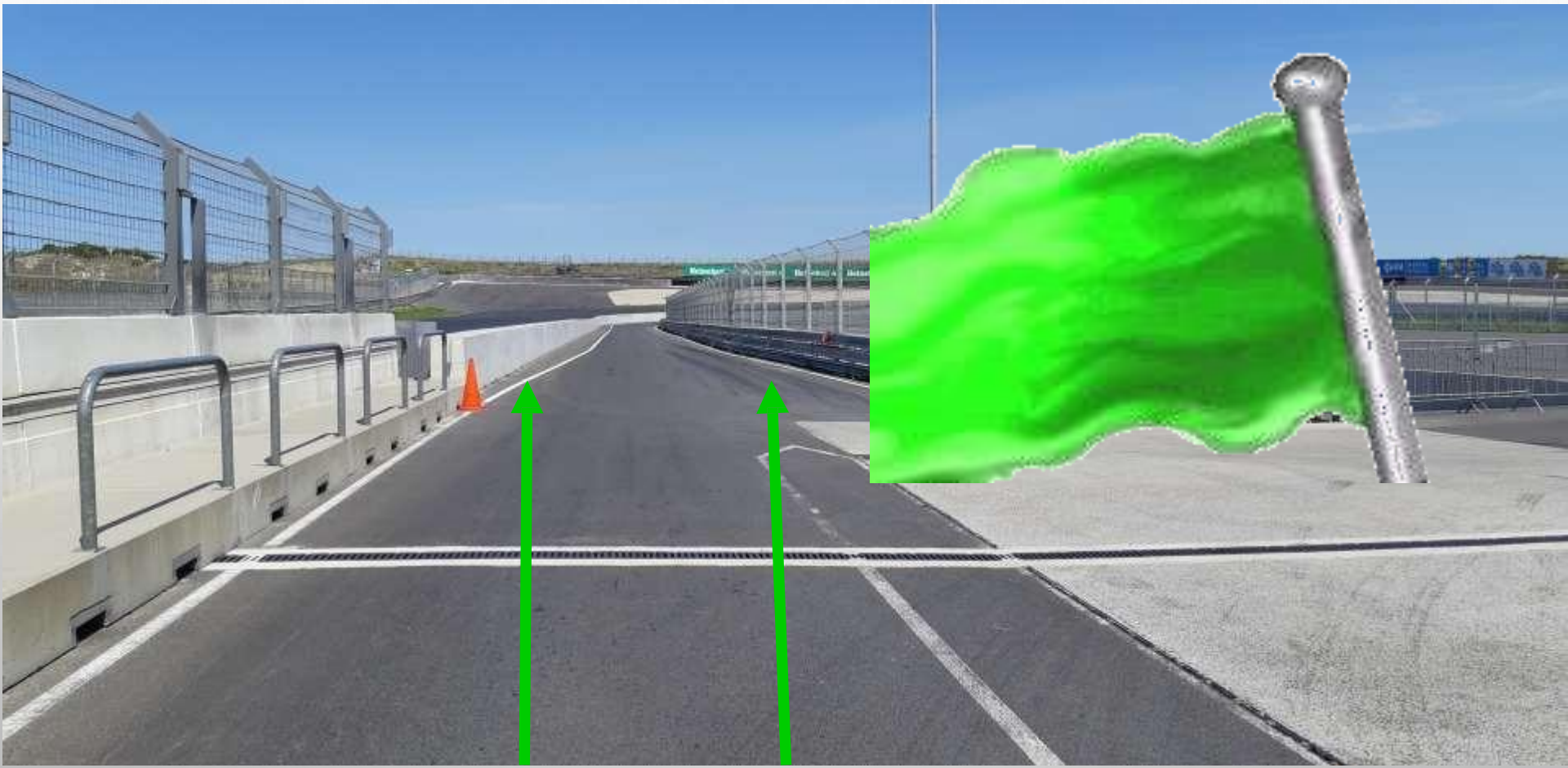
Pit Open at 08.40

Pit Close at 08.45



START PROCEDURE

LEADING CAR ON TRACK





08.40

GREEN FLAG





08.45

**PITLANE
CLOSED**



BOARD

5 Min

**All Cars on
Grid**



BOARD

5 Min

**2 Min Before
end of Working**



BOARD

3 Min

**END OF WORK
ON TRACK**



BOARD

1 Min

**START YOUR
ENGINE**





FORMATION LAP

T13 - STAY

SIDE BY SIDE

FORMATION
COMPLETED



TO GRID



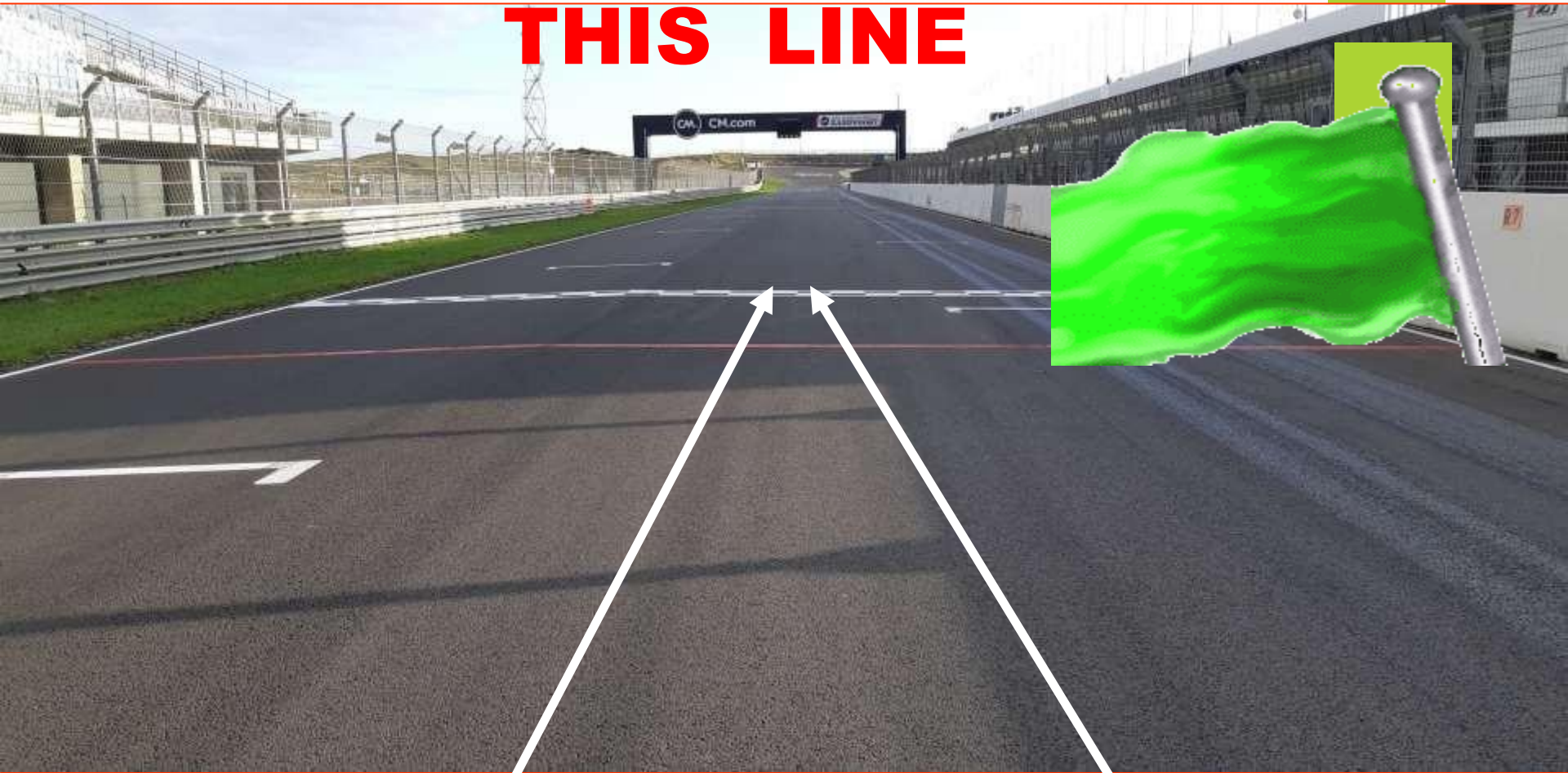
**LEADING
CAR
IN**

FOLLOW THE SPEED OF THE LEADING CAR

**RESPECT THE
SPEED OF THE
LEADING CAR**

2 BY 2 FORMATION

**NO OVERTAKING BEFORE
THIS LINE**

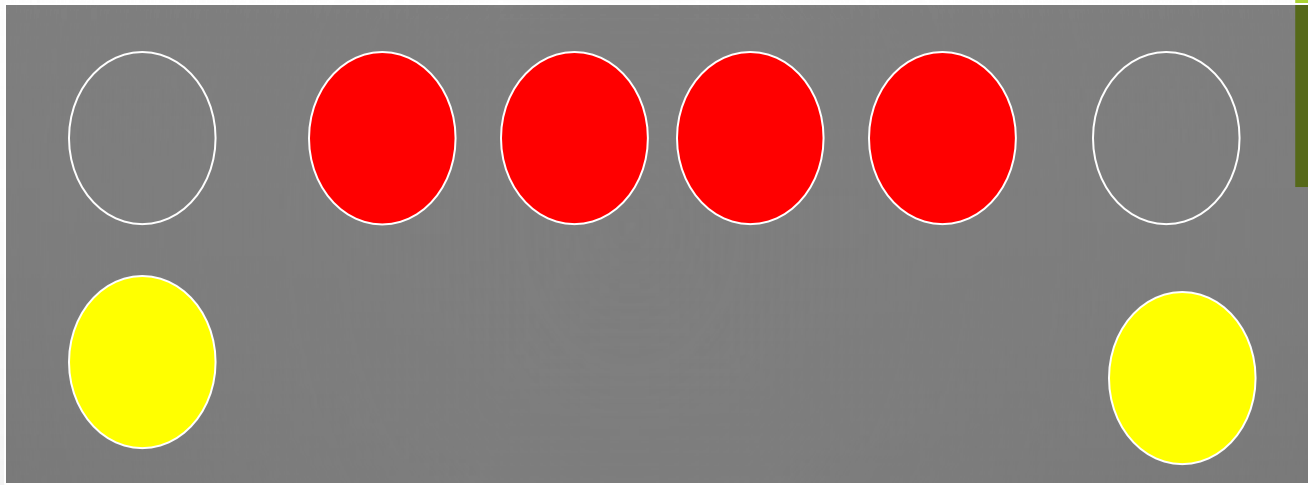


GREEN FLAG => START



Light for information

ROLLING START

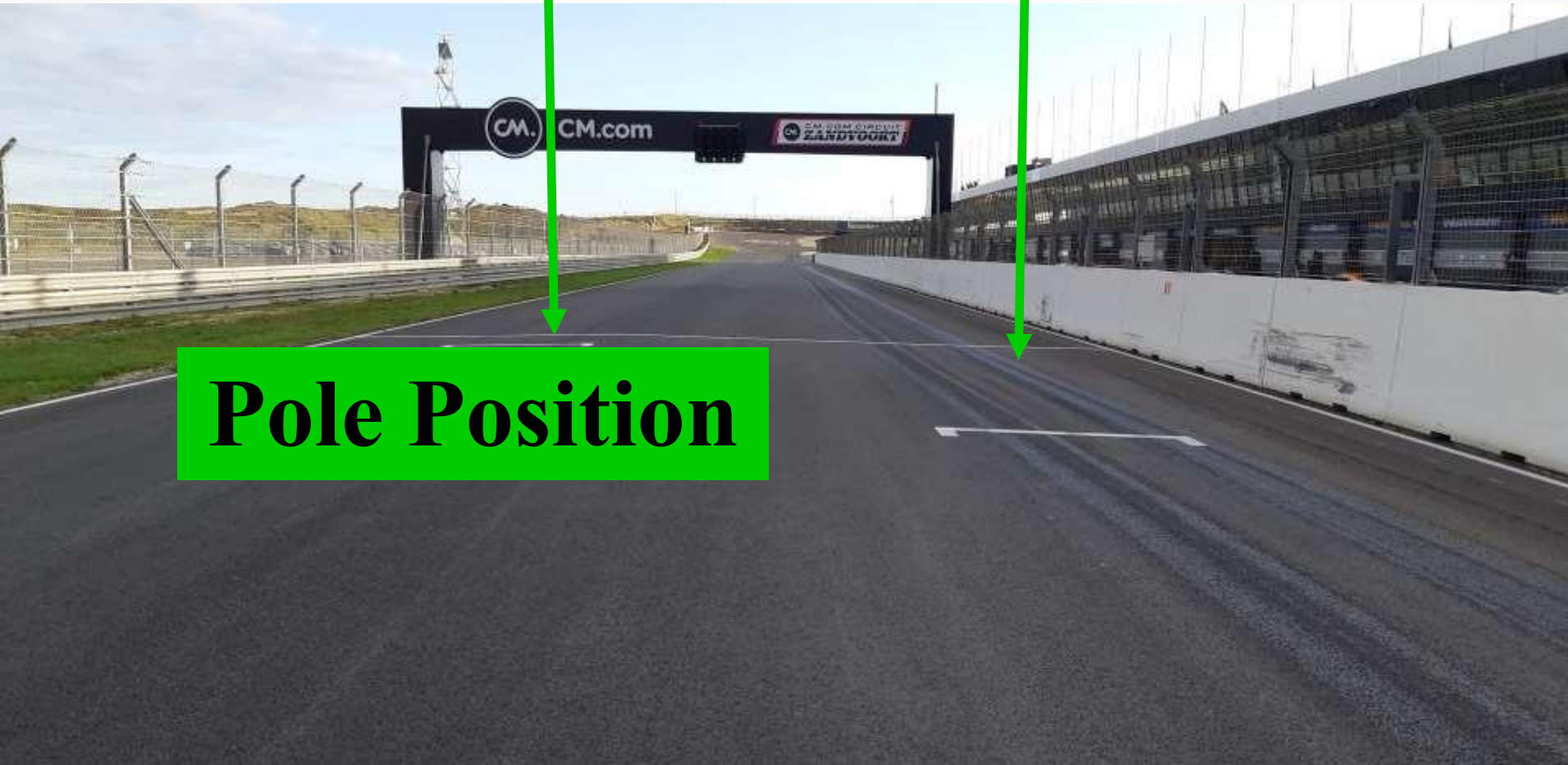


**YELLOW FLASHING
LIGHT**

**START DELAYED OR
EXTRA FORMATION LAP**

START LINE

Pole Position





FUN CUP



RACE AND SAFETY INFORMATION

Web Result

<https://results.ris-timing.be/funbe/benelux/2025/index.htm>

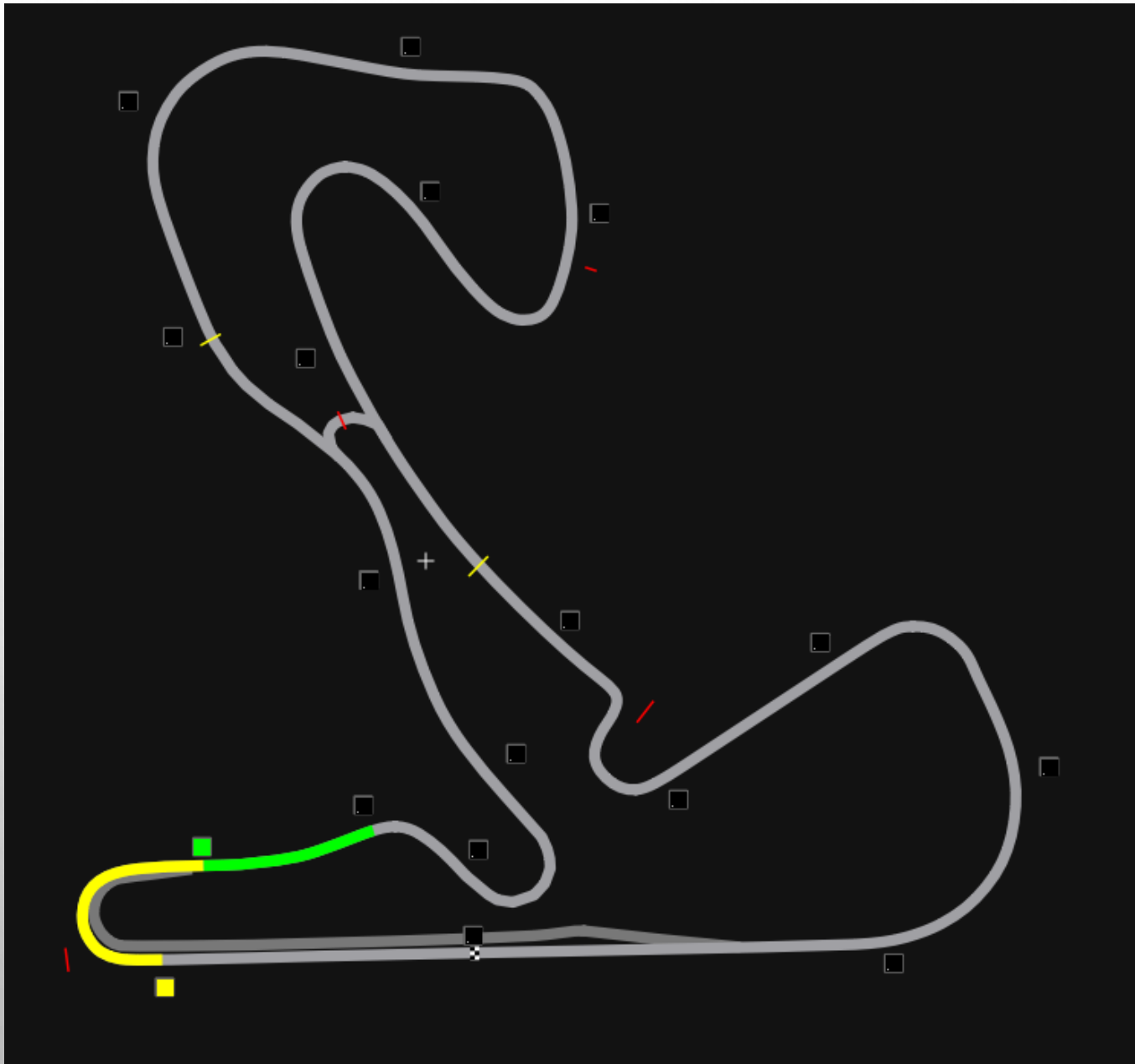
STOP & GO AREA





INCIDENT TURN 1

VIEW TRACKING

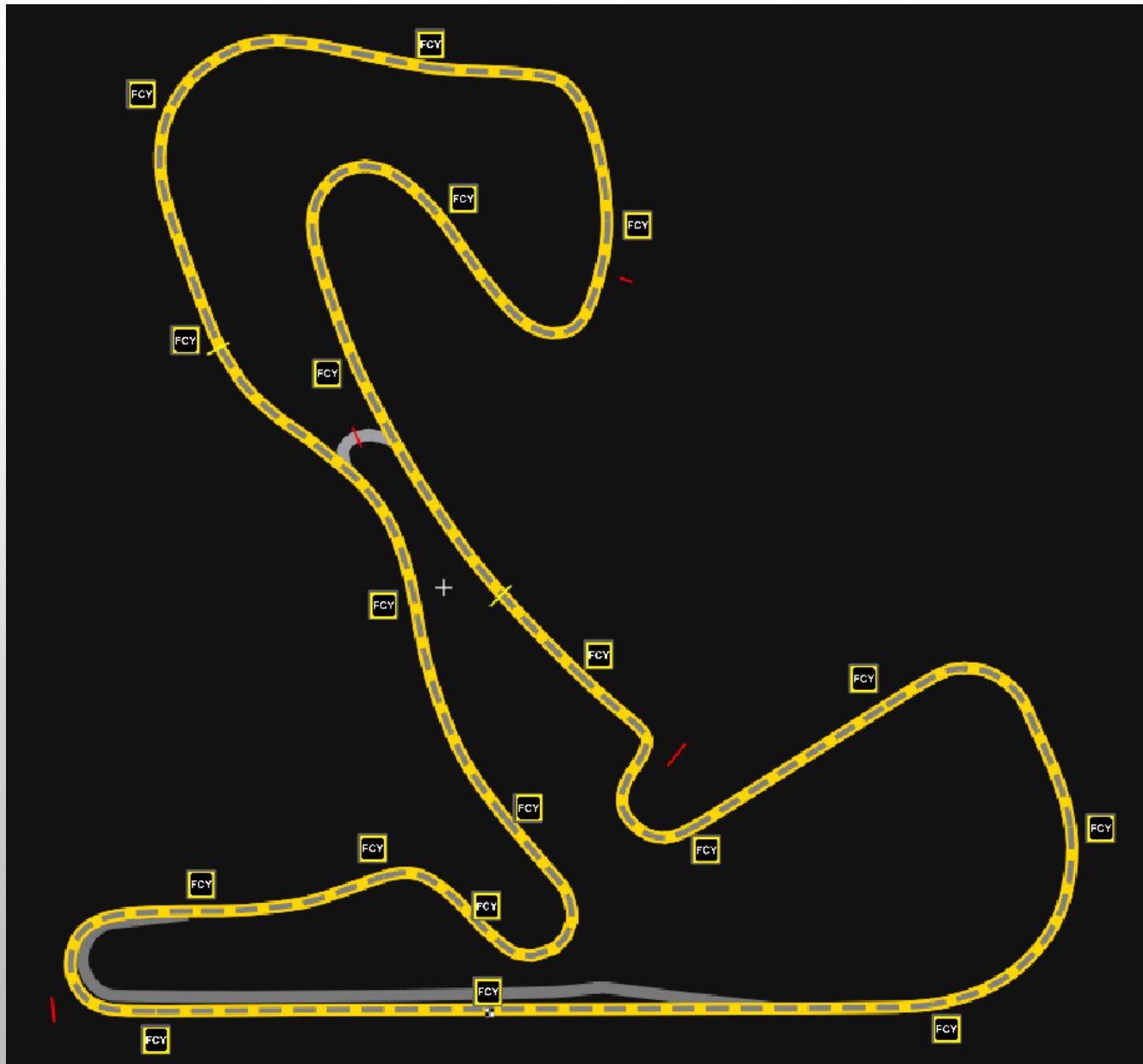




**FULL
COURSE
YELLOW**

**FCY
PROCEDURE**

VIEW TRACKING





**START
OF
COUNTDOWN
5,4,3,2,1,0**





**AFTER
INTERVENTION**

**TRACK CLEAR
Imminent Restart**



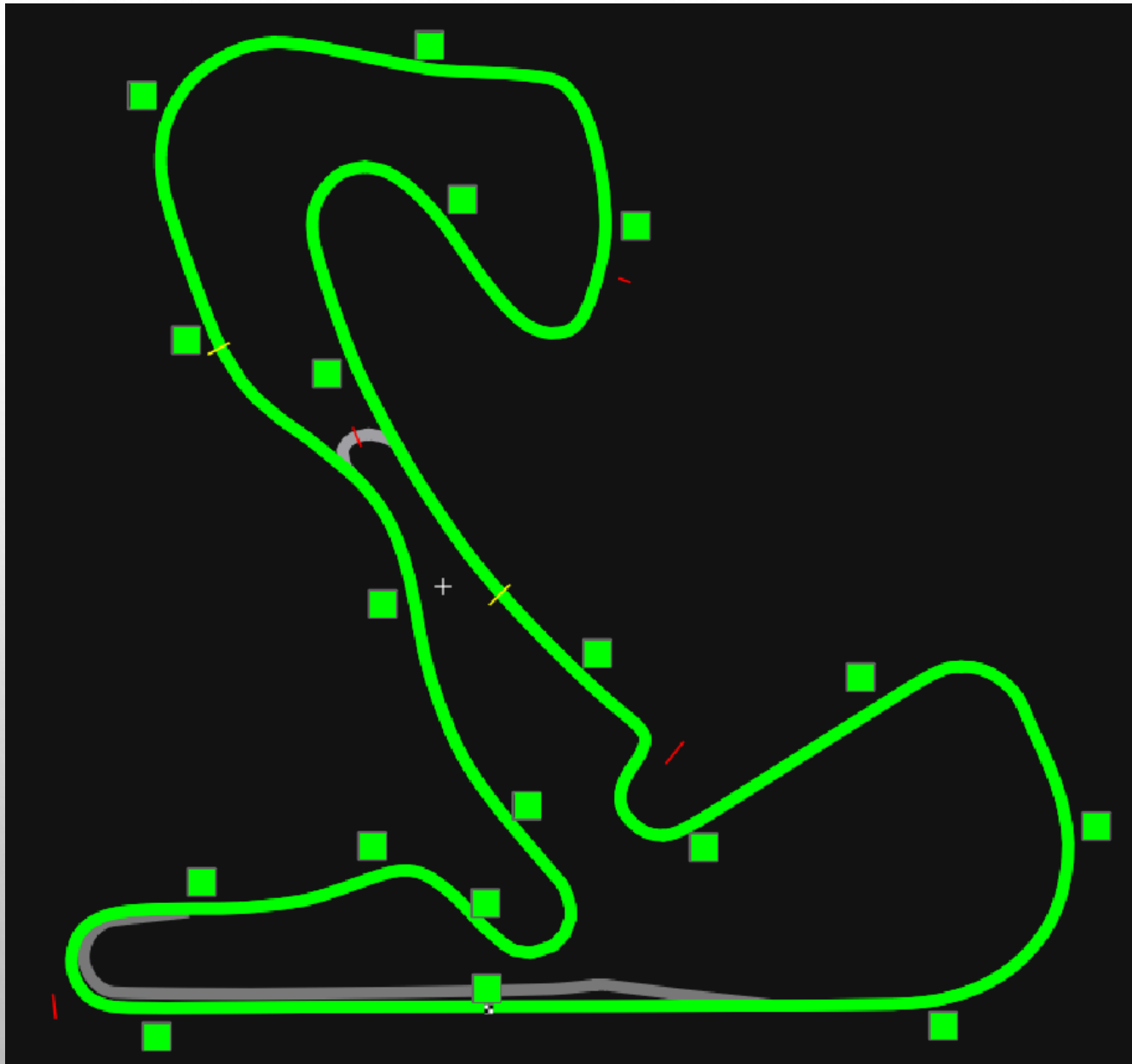
**START
OF
COUNTDOWN
5,4,3,2,1,0**

**FULL
COURSE
GREEN**

ALL SECTORS

GREEN

VIEW TRACKING





NO RESPECT THIS PROCEDURE

=

1 Warning

2 – Stop & Go

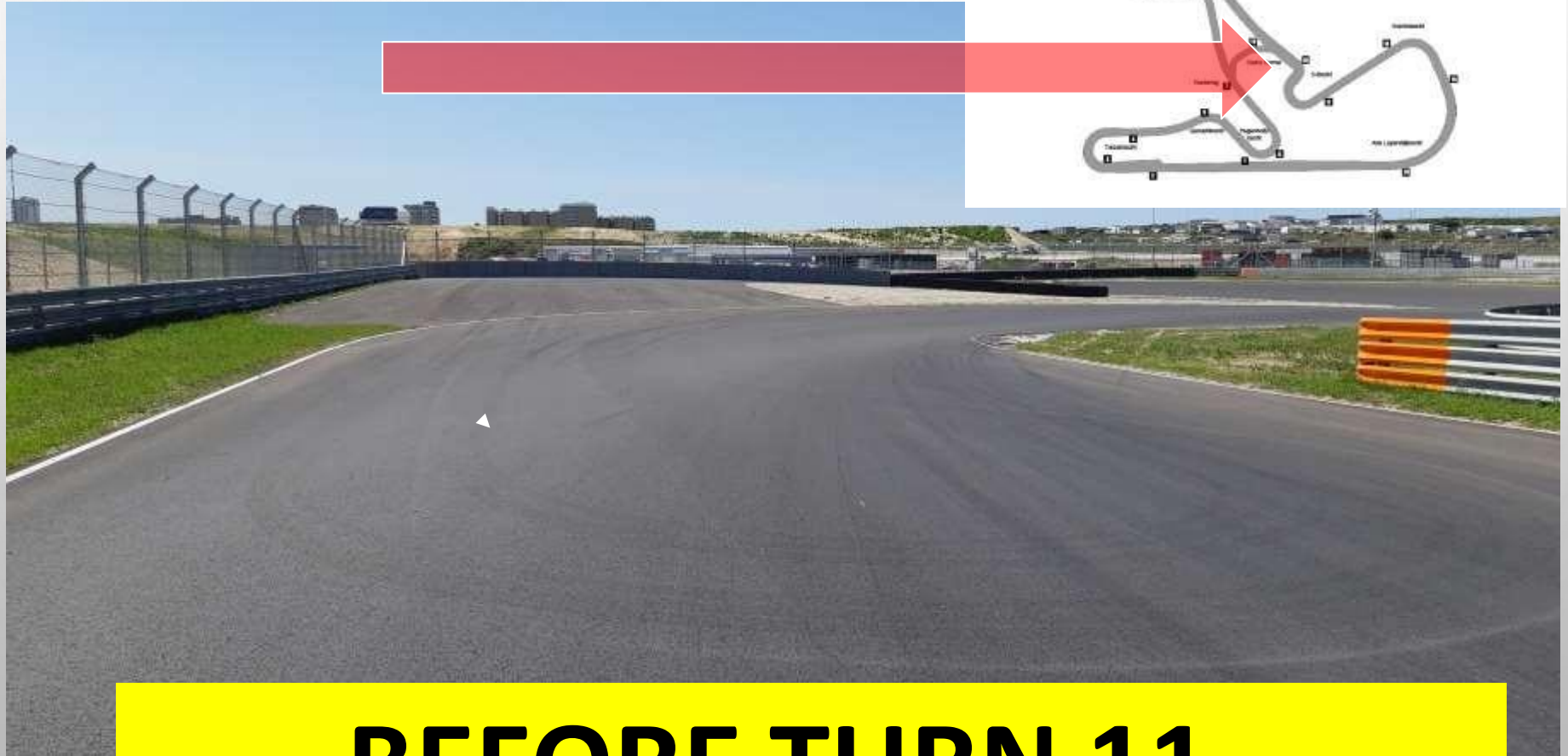
3 – 1 Lap Penalty

4 – 1 Lap Penalty



SAFETY CAR STAND BY POSITION

SC LIGHT OFF



BEFORE TURN 11



RESTART



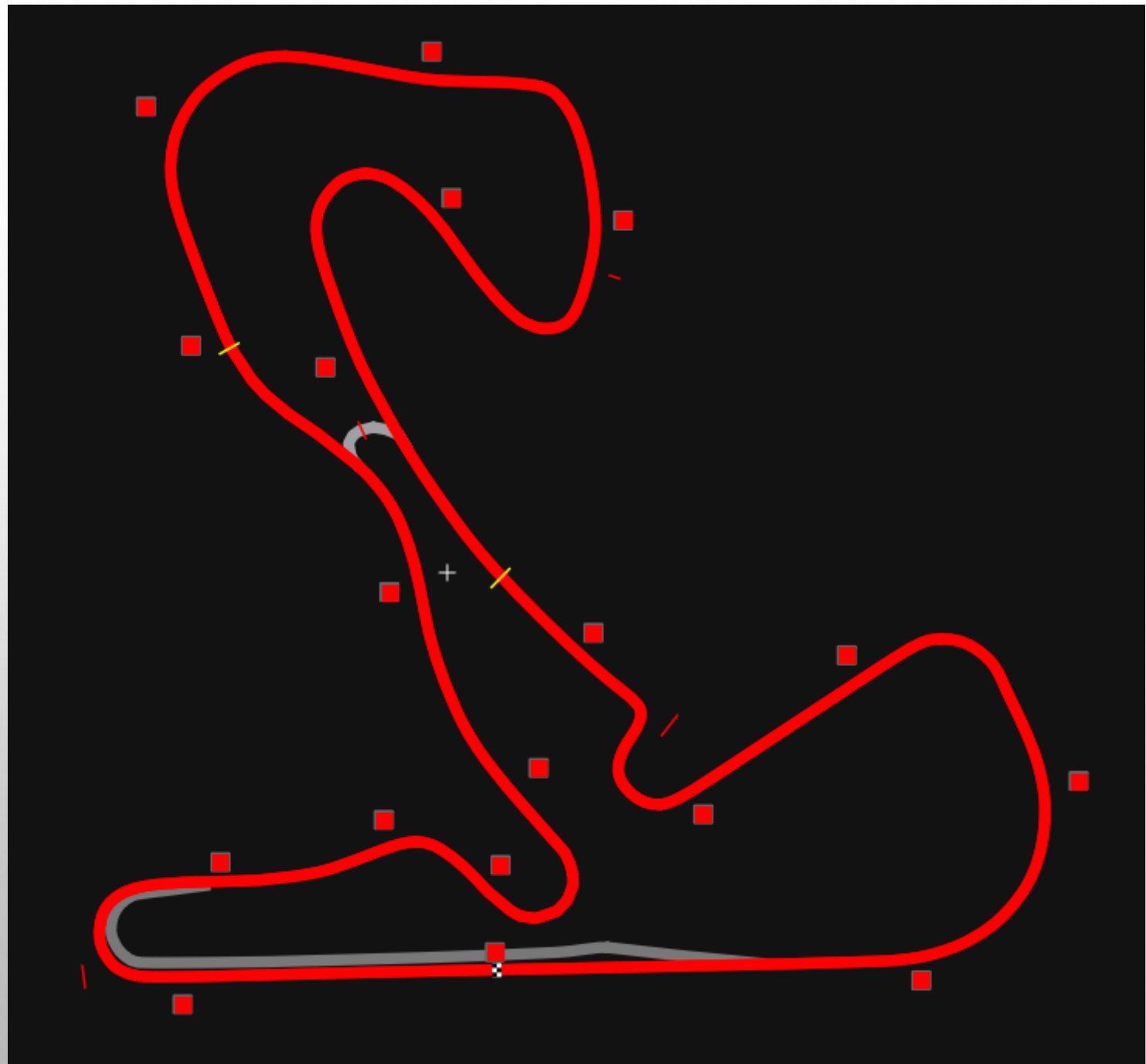
RED FLAG

DANGER

**IMMEDIATE RACE OR
QUALIFYING INTERRUPTION**

SLOWLY AND CAREFULLY

BACK TO PIT



FUN CUP

An orange silhouette of a car, likely a Volkswagen Beetle, is positioned between the words 'FUN' and 'CUP' in the main title.

 **Hankook**
driving emotion

Contact Race Direction

Radio communication & Use channel

453.4625 MHz QT = D023N

ONLY RECEPTION



Contact Race Direction

ET
UTILISATION SYSTÈME FRANCE





REFUELING PITLANE INFORMATION

REFUELING INFO TEAM APPLICATION

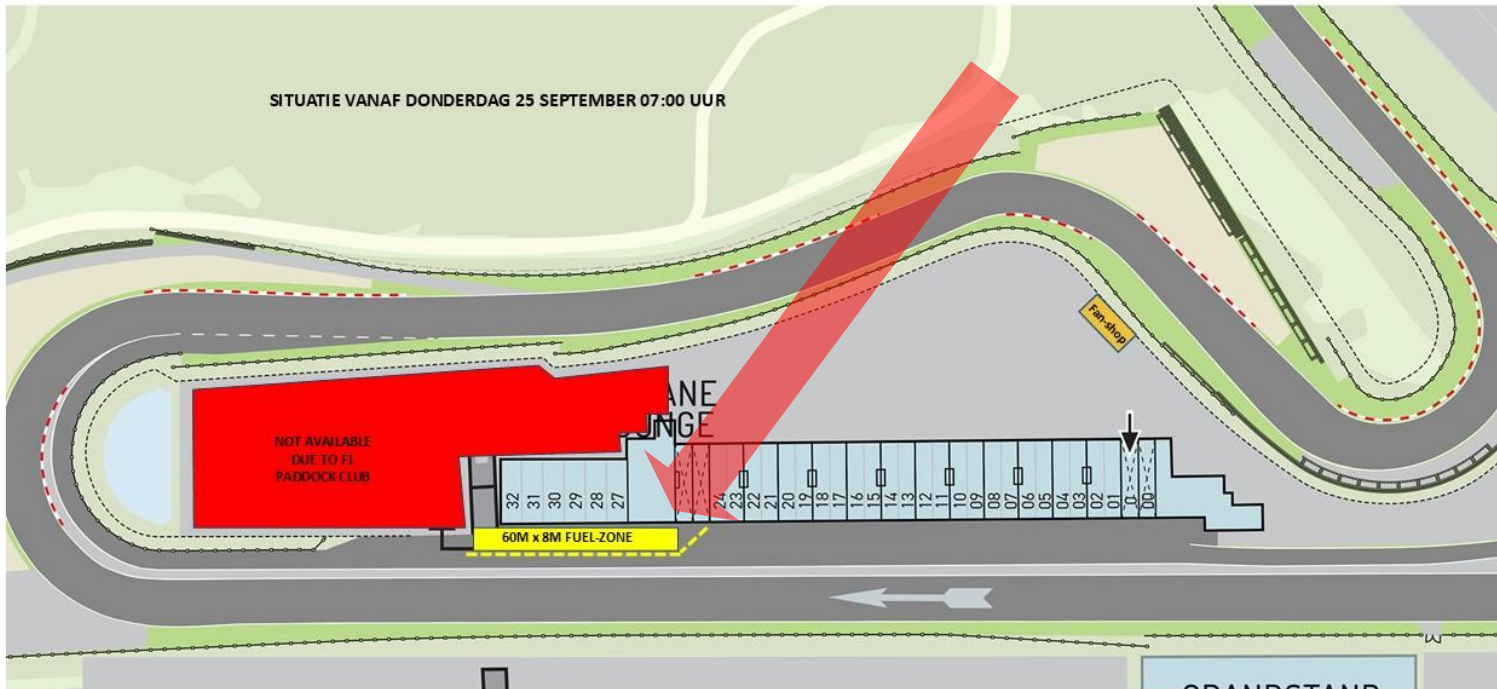
**[HTTPS://DOCS.GOOGLE.COM/SPREADSHEETS/D
/1HQQGBRYZ6KBBNRLBNRQFWVYRXBTfOMQ
TE6YTFSG5MzM/EDIT?GID=0#GID=0](https://docs.google.com/spreadsheets/d/1HQQGBRYZ6KBBNRLBNRQFWVYRXBTfOMQTE6YTFSG5MzM/edit?gid=0#gid=0)**

REFUELING AREA





REFUELING AREA



!!! MORE ATTENTION !!!
!!! PLEASE !!!



!!! STAY 30 KM/H !!!

TRACK

FAST LANE

REFUELLING LANE

ROLLING LANE

WORKING LANE

BOX/STAND

IMPORTANT !



Maximum fuel

42 Litres

FUN CUP

An orange silhouette of a car, likely a Volkswagen Beetle, positioned between the words 'FUN' and 'CUP' in the 'FUN CUP' logo.

 **HANKOOK**
driving emotion

RACE AND PITLANE INFORMATION

CAUTION IN PITLANE

NO CREW IN
FRONT OF A
STOPPING
CAR

PROHIBITED!!!!





**PLEASE RESPECT THE PITLANE
PROCEDURE**

SPEED LIMIT IN 50KM/H



**SPEED LIMIT IN AND
CHRONO LINE IN !**

RADAR CONTROL





Radar, My Laps & Speed Gun CONTROL

BACK TO 50 KM/H



PIT EXIT AND CHRONO OUT

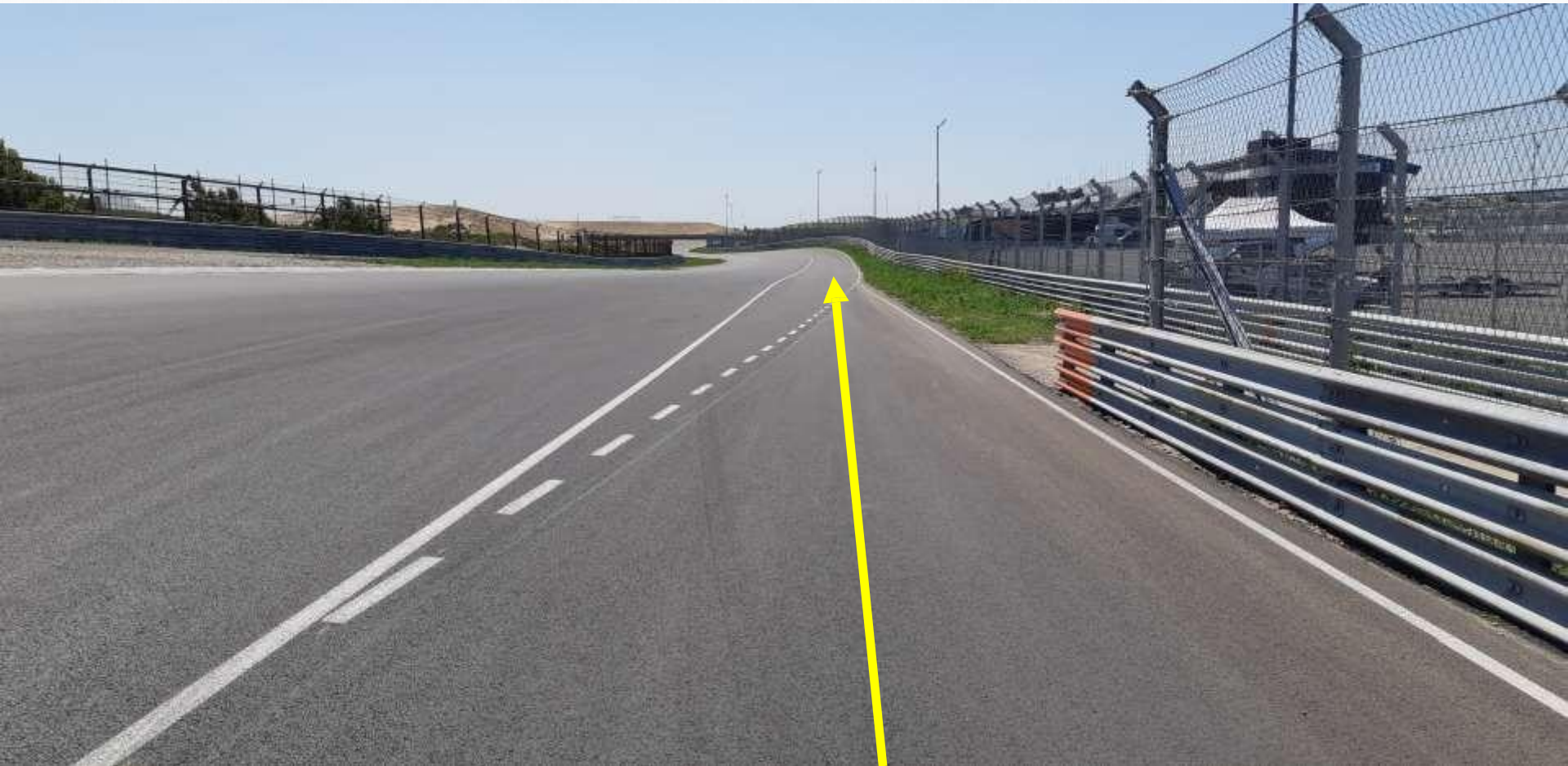


SPEED LIMIT OUT

PITLANE EXIT



PITLANE EXIT KEEP RIGHT



FUN CUP

An orange silhouette of a car, likely a Volkswagen Beetle, positioned between the words 'FUN' and 'CUP' in the 'FUN CUP' logo.

 **HANKOOK**
driving emotion

TRACK INFORMATION

ZANDVOORT · NETHERLANDS 

SECTOR 3

START / FINISH

SECTOR 1

SECTOR 2

TRACK DISTANCE

4.259 KM / 2.646 MILES

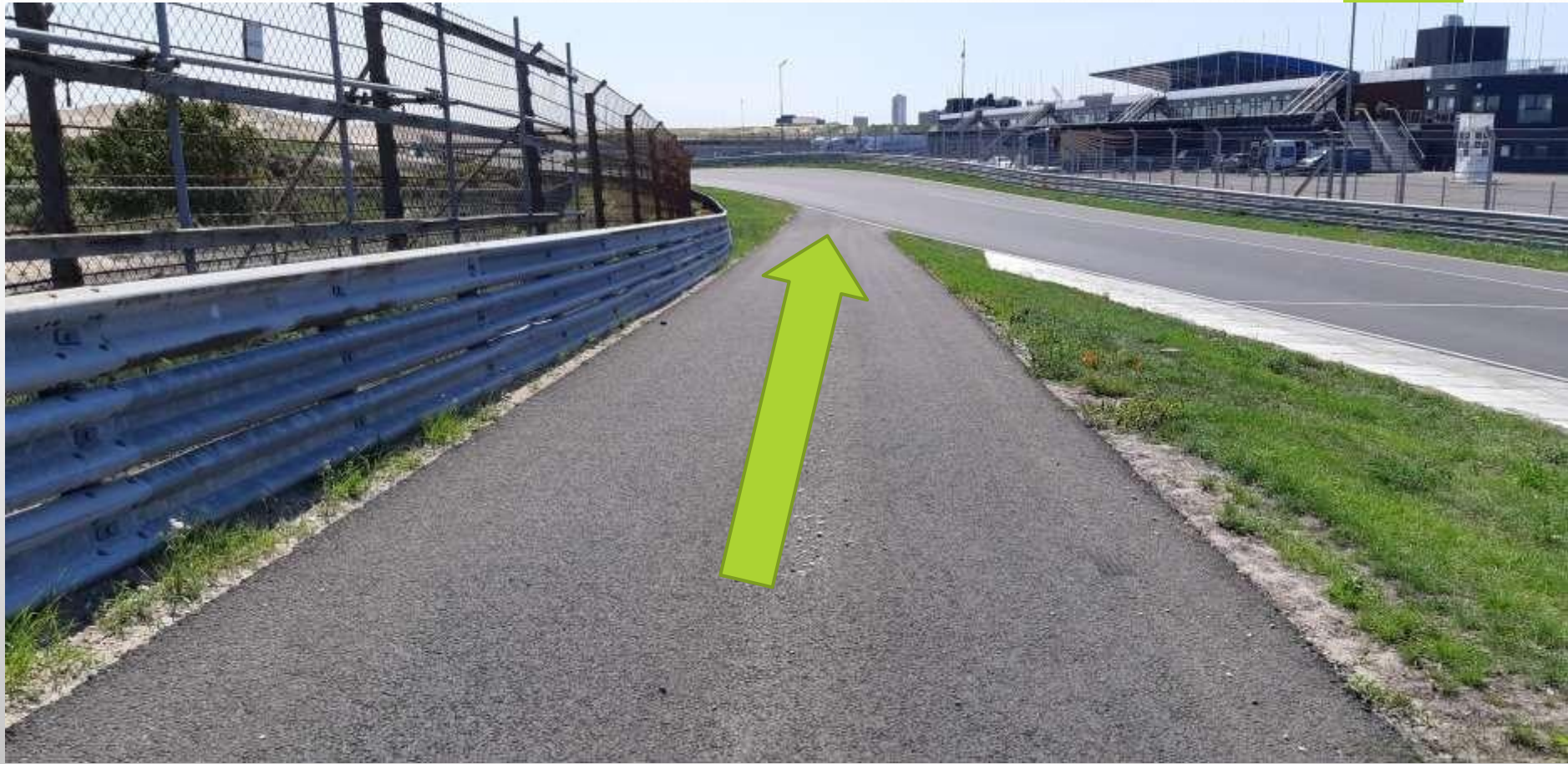
TURNS

14





MORE ATTENTION T1



MORE ATTENTION T1



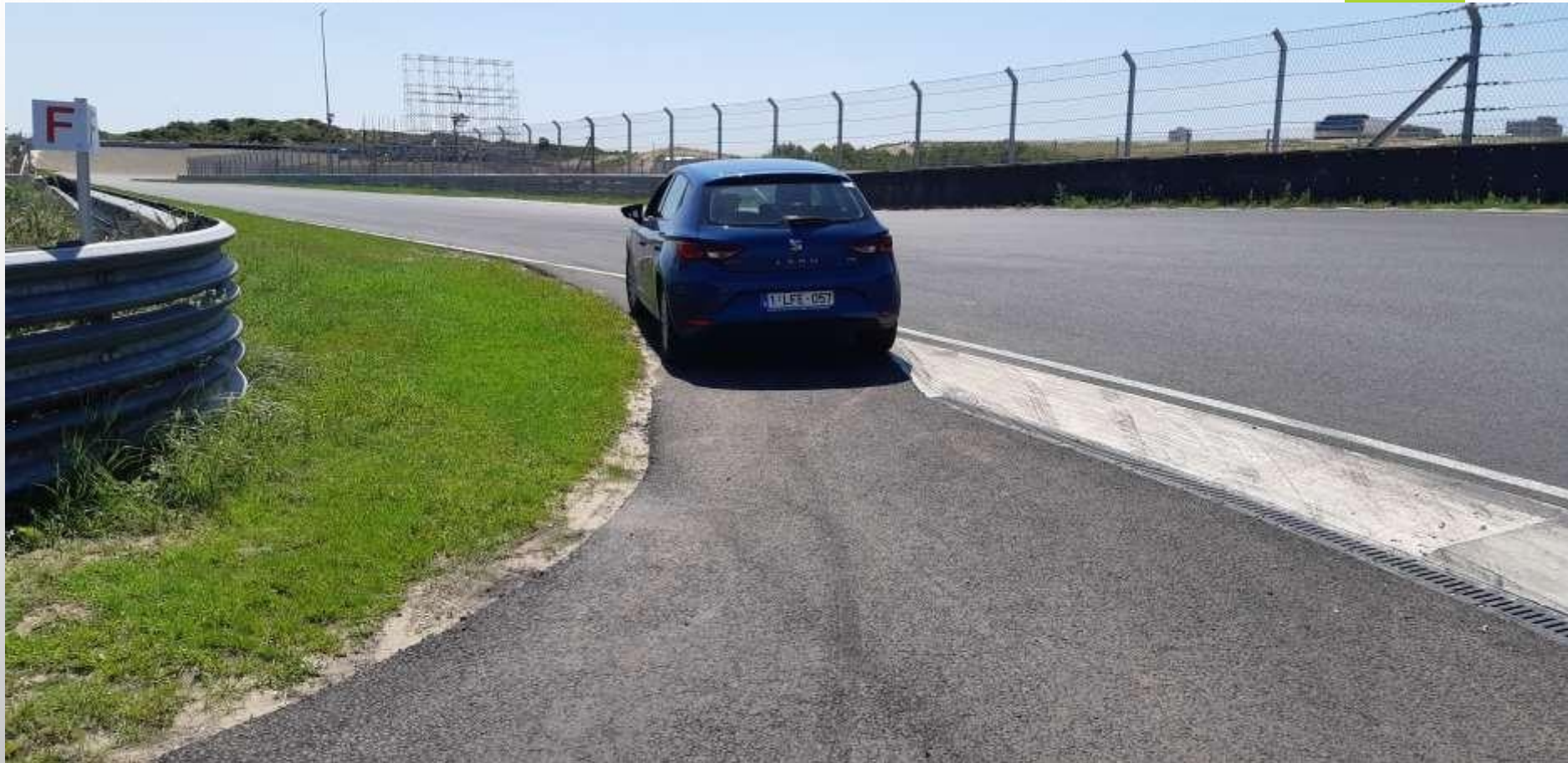
MORE ATTENTION T8



MORE ATTENTION T11



MORE ATTENTION T12



MORE ATTENTION T12



CHRONO LINE

FUN CUP

An orange silhouette of a car, likely a Volkswagen Beetle, positioned between the words 'FUN' and 'CUP' in the 'FUN CUP' logo.

 **HANKOOK**
driving emotion

RACE INFORMATION

PITSTOPS SINGLE SEATERS

20 Minutes

Every 40 Minutes

Open 10 Min Before

Close 10 min After

PITSTOPS SINGELS SEATERS

8 HOURS RACE

=

6 MANDATORY REFUELING

PITSTOPS SINGELS SEATERS

NORMAL PIT WINDOW = 90 SEC

**PIT WINDOW TIME WITH REFUELING
= 180 SEC**

**ONLY REFUELING TIME
= 180 SEC (OUT OF PIT WINDOW)**

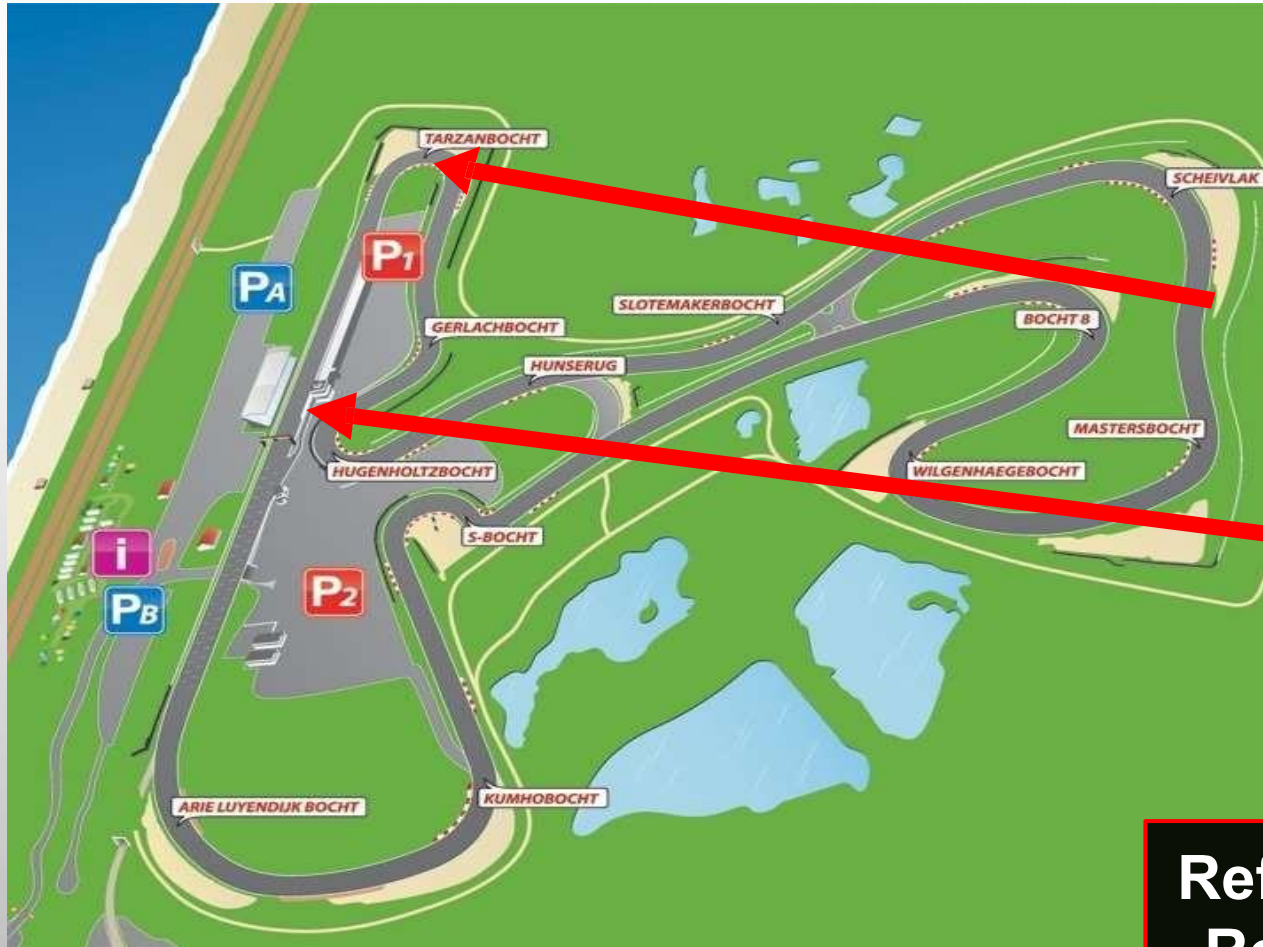
PITSTOPS SINGELS SEATERS

8 HOURS RACE

PIT IN / PIT OUT

373 M

PITLANE



Pit Exit

Pit Entry

**Refueling Area :
Respect 30 Km/h**

373 m = Pit In / Pit Out

PITSTOPS DOUBLE SEATERS

15 STOPS

2 MINUTES PER STOP

PITSTOPS DOUBLE SEATERS

30 SECONDS IF
NO PASSENGER

And 10 seconds more with a
TOP GUN DRIVER

FUN CUP

An orange silhouette of a car, likely a Volkswagen Beetle, positioned between the words 'FUN' and 'CUP' in the 'FUN CUP' logo.

 **Hankook**
driving emotion

***RACE DIRECTION
WISHES YOU A
GREAT WEEKEND
AT ZANDVOORT***

FUN CUP

 **HANKOOK**
driving emotion

